

ROGUE



PHOTOMETRICS REPORT



Table of Contents

Introduction	1
Testing Process	1
Total Illuminance Measurements.....	1
Testing Lab Equipment and Process.....	1
Photometrics & Chromaticity Reports	2
Full Spot - Full Power	3
Report Summary.....	3
Overall Measurement.....	3
Beam Details.....	4
ISO Diagrams.....	5
Chromaticity.....	6
TM-30 Details.....	7
Full Spot - Full Power - Auto	8
Report Summary.....	8
Overall Measurement.....	8
Beam Details.....	9
ISO Diagrams.....	10
Chromaticity.....	11
TM-30 Details.....	12
Full Spot - Full Power - Auto - Stable	13
Report Summary.....	13
Overall Measurement.....	13
Beam Details.....	14
ISO Diagrams.....	15
Chromaticity.....	16
TM-30 Details.....	17
Full Spot - Full Power - ECO	18
Report Summary.....	18
Overall Measurement.....	18
Beam Details.....	19
ISO Diagrams.....	20
Chromaticity.....	21
TM-30 Details.....	22
Contact Us	23

Testing Process

Total Illuminance Measurements

Illuminance is measured using the Viso Systems LabSpion[®], which takes multiple measurements across a light beam to calculate the total delivered lumens, beam, and field of a product. These values can be described as the empirical output of the product as it projects from the lens or lenses. All photometric data contained in this report are obtained from the actual illuminance of the tested Chauvet light source and are never theoretical values derived from calculations.

Testing Lab Equipment and Process

The Chauvet headquarters in Sunrise, Florida has a climate- and light-controlled photometric testing laboratory where Chauvet products are analyzed and photometric data are measured using the Viso Systems LabSpion[®] light measurement solution.

This system includes a spectrometer sensor, which measures the precise light and color output of the fixture, and a two-axis goniometer, which rotates the product to allow for multi-angle and multi-directional measurement. The Viso Light Inspector software then collects and summarizes the data. From the data gathered, the software can also measure the beam and field angles, accurate color temperature, color quality, and illuminance at multiple distances. The custom-built, Chauvet-specific template presents this information in the photometric and chromaticity reports that follow.

IES (Illuminating Engineering Society) files, an industry-standard file format, are also generated from each test for easy distribution of photometric data.

Several light meters are also used for specific products or to recheck for precision. Accuracy is verified using one or more of the devices listed below:

- Sekonic SpectroMaster C-700-U
- EXTECH HD450 Datalogging Heavy Duty Light Meter
- Asensetek Essence Lighting Passport

To ensure accurate measurements in every photometric or chromaticity test, Chauvet routinely calibrates the LabSpion[®] system every six months as recommended by Viso Systems.

ROGUE



Photometrics & Chromaticity Reports

Photometric & Chromaticity Report

Rogue R2E Spot : Full Spot - Full Power

Report Summary

Measurements

Fixture Output: 16345 lm
Fixture Peak: 283853 cd
Fixture Efficacy: 39 lm/W
Intensity @ 5m: 11354 lux
Color Temperature: 8215 K
CRI: 68.6 CRI R9 Value: -28.3
CQS: 68.6
TLCI: 43
TM-30 Rf: 67.8
TM-30 Rg: 95.4
Beam Angle (50%): 15.9°
Field Angle (10%): 18.1°
Cutoff Angle (3%): 20.3°

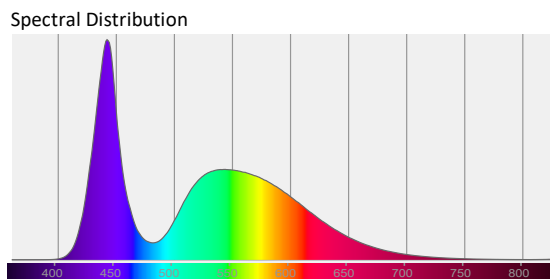
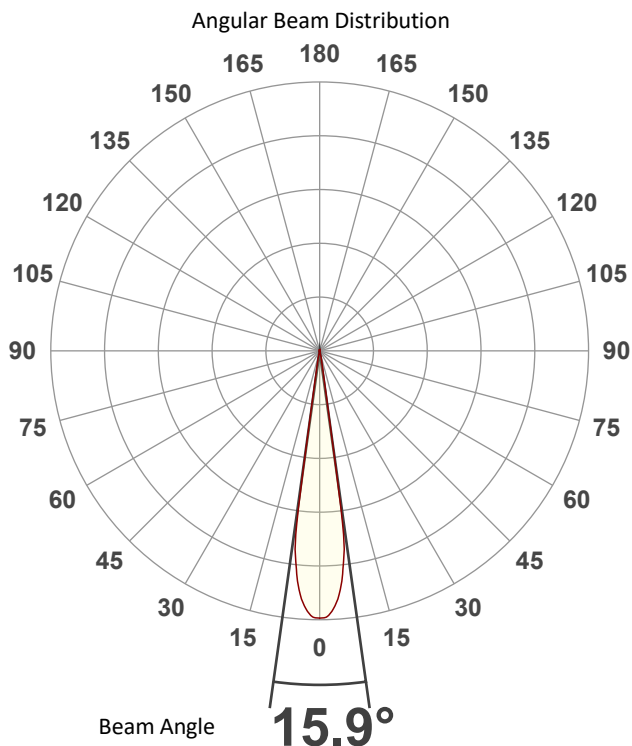


Conditions

AC Supply: 113 V, 60 Hz
Power: 423.72 W
Current: 3.76 A
Power Factor: 0.99

This data sheet conforms to American National Standard E1.9 – 2007 (R2017). All data was measured and calculated by a Viso Systems LabSpion Goniometer at the Chauvet PD Optics Laboratory in Sunrise, FL on 1/15/2024 to LM-63-2002 Standards.

Overall Measurement



Tested Color (CIE 1931):
X: 0.293
Y: 0.303

Light Quality
CRI: 68.6

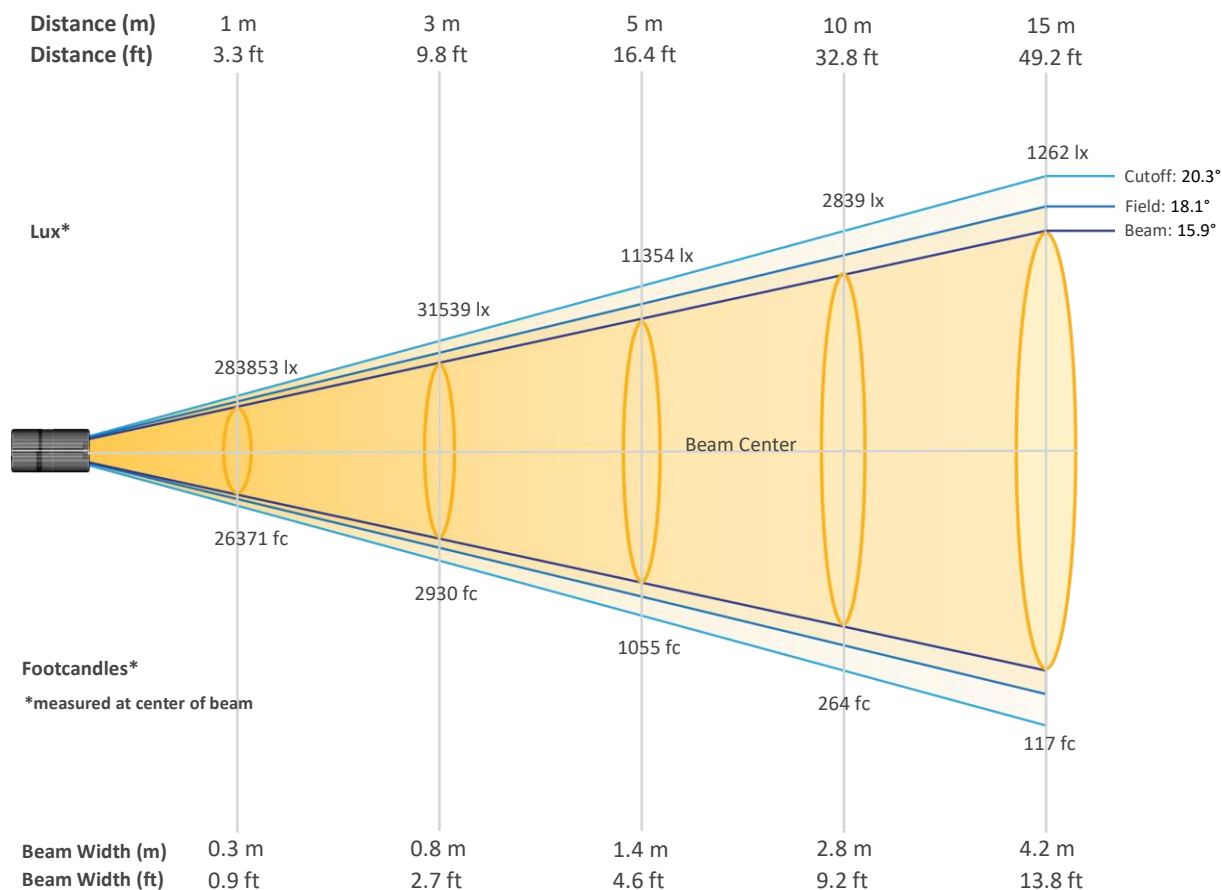
Color Temperature
8215 K



Photometric & Chromaticity Report

Rogue R2E Spot : Full Spot - Full Power

Beam Details

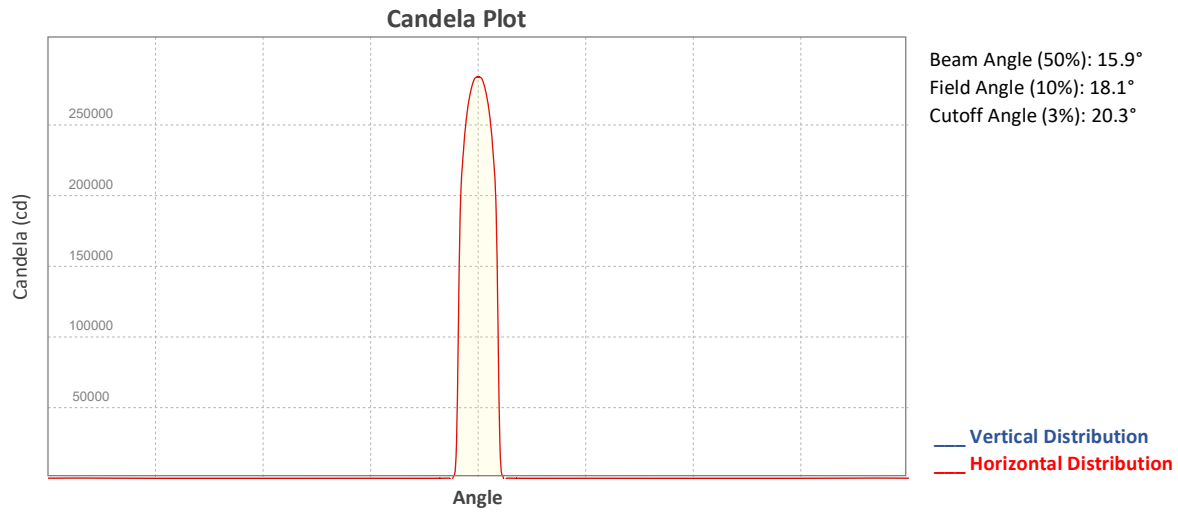


Beam Intensities from 1-20m (3.3-65.6ft)

Distance	1m	2m	3m	4m	5m	6m	7m	8m	9m	10m
Lux	283853	70963	31539	17741	11354	7885	5793	4435	3504	2839
Distance	11m	12m	13m	14m	15m	16m	17m	18m	19m	20m
Lux	2346	1971	1680	1448	1262	1109	982	876	786	710
Distance	3.3ft	6.6ft	9.8ft	13.1ft	16.4ft	19.7ft	23ft	26.2ft	29.5ft	32.8ft
FC	26371	6593	2930	1648	1055	733	538	412	326	264
Distance	36.1ft	39.4ft	42.7ft	45.9ft	49.2ft	52.5ft	55.8ft	59.1ft	62.3ft	65.6ft
FC	218	183	156	135	117	103	91	81	73	66

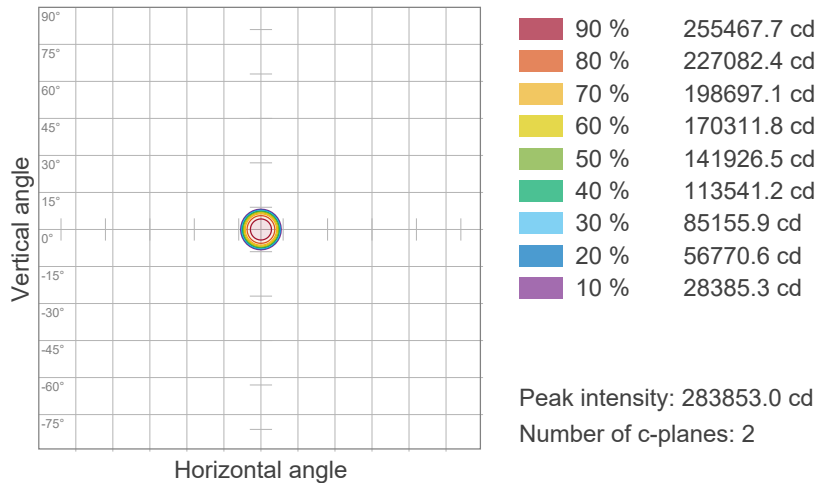
Photometric & Chromaticity Report

Rogue R2E Spot : Full Spot - Full Power

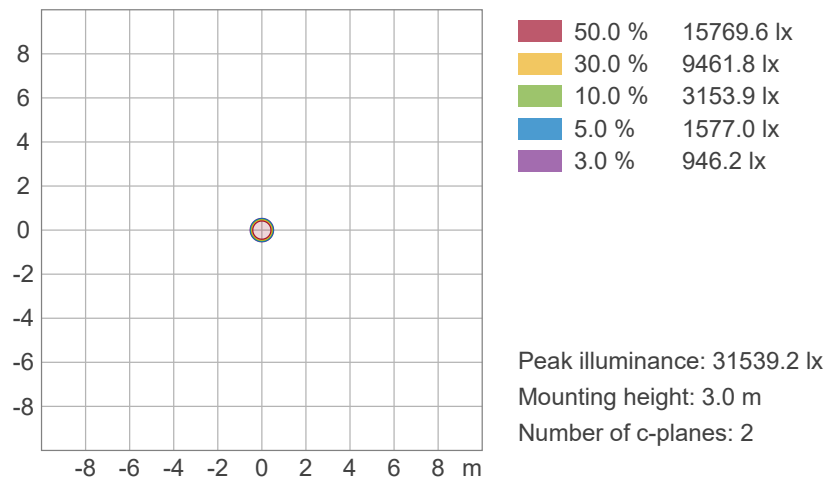


ISO Diagrams

ISO Candela Diagram



ISO Lux Diagram

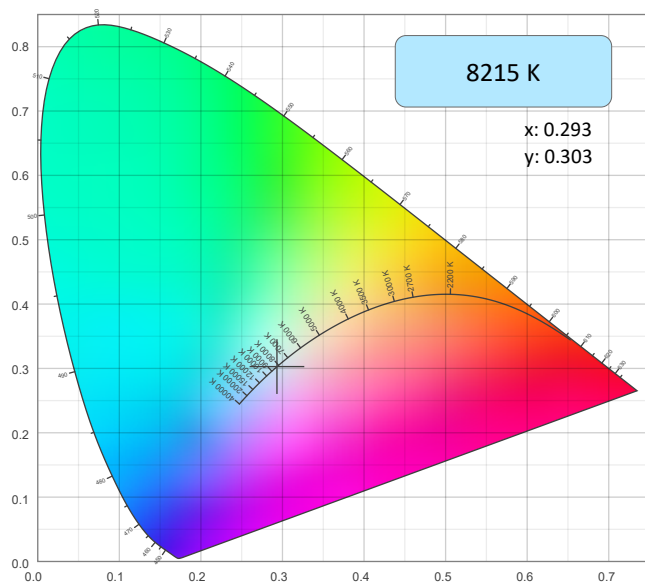


Photometric & Chromaticity Report

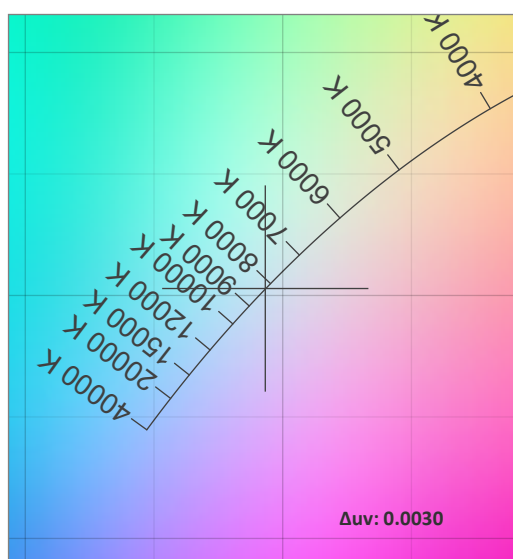
Rogue R2E Spot : Full Spot - Full Power

Chromaticity

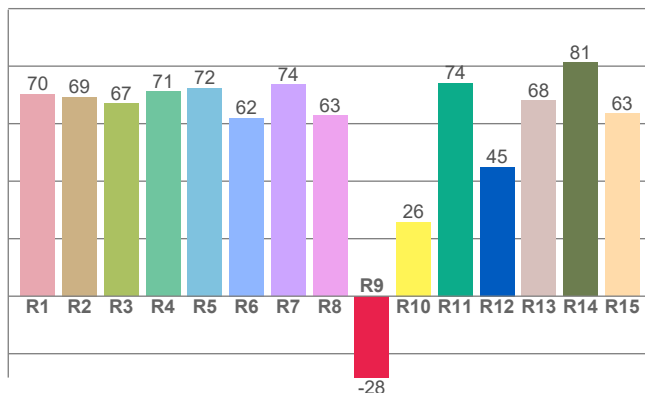
CIE 1931



CIE 1931 - Zoom



CRI: 68.6 (R1-R8)

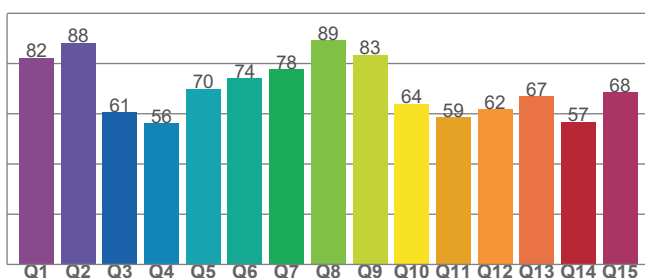


Color Parameters

Color Temperature	Color Coordinate CIE 1931	Color Coordinate CIE 1931
CCT	x	y
8215 K	0.293	0.303

Color Deviation from Black Body Curve	Color Coordinate CIE 1964	Color Coordinate CIE 1964
Δuv	y	u
0.0030	0.303	0.194

CQS: 68.6



Color Rendering Index	Red Component	Color Quality Scale
CRI	CRI - R9	CQS
68.6	-28.3	68.6

Television Lighting Consistency Index	Color Fidelity	Color Gamut
TLCI	TM30 - Rf	TM30 Rg
43	67.8	95.4

Photometric & Chromaticity Report

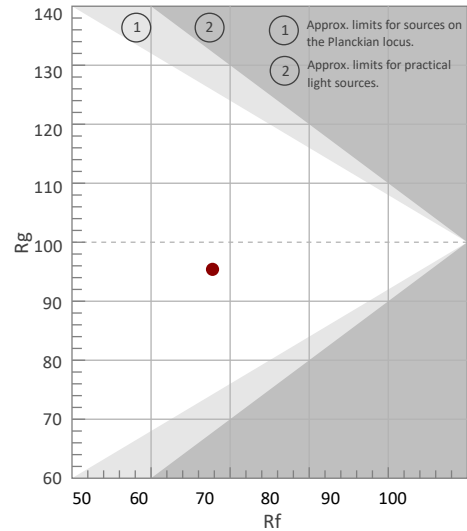
Rogue R2E Spot : Full Spot - Full Power

TM-30 Details

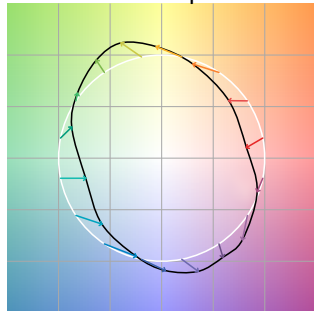
Rf 67.8
Fidelity Index (Rg)

Rg 95.4
Gammut Index (Rg)

Hue Bin	R _f	Graphic shifts (%)	
		Chroma	Hue
1	68	-17%	-6%
2	68	-15%	10%
3	60	-7%	25%
4	57	5%	26%
5	63	17%	17%
6	78	14%	0%
7	89	3%	-7%
8	74	-9%	-13%
9	78	-24%	5%
10	63	-16%	21%
11	34	-7%	32%
12	65	6%	25%
13	75	15%	13%
14	76	13%	-4%
15	73	9%	-22%
16	75	-3%	-14%



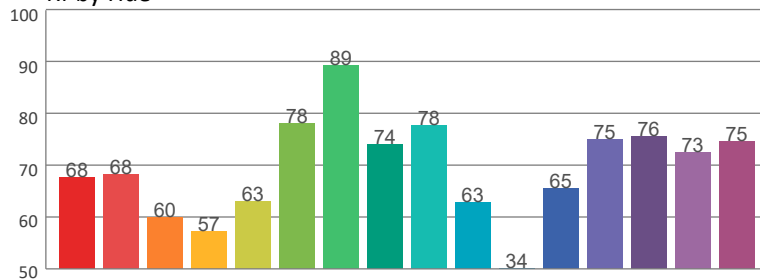
Color Vector Graphic



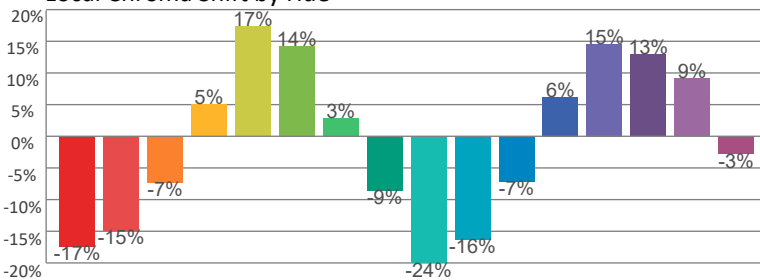
Color Distortion Graphic



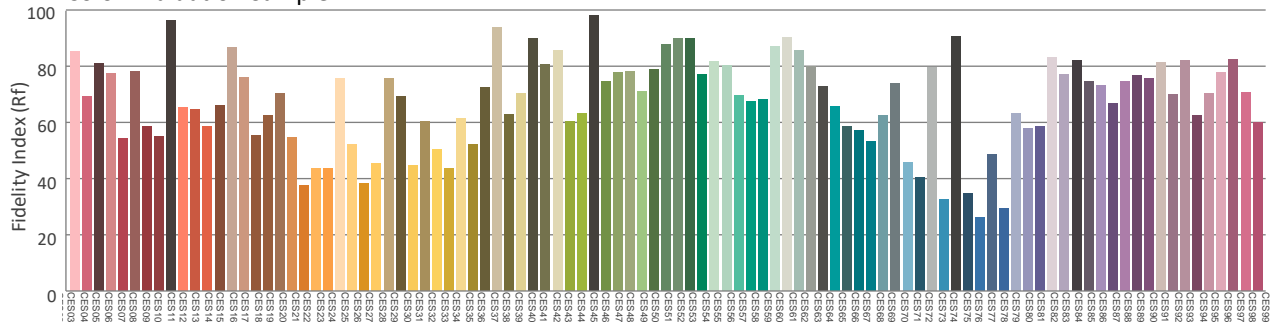
R_f by Hue



Local Chroma Shift by Hue



Color Evaluation Sample



Photometric & Chromaticity Report

Rogue R2E Spot : Full Spot - Full Power - Auto

Report Summary

Measurements

Fixture Output: 16396 lm
Fixture Peak: 283421 cd
Fixture Efficacy: 39 lm/W
Intensity @ 5m: 11337 lux
Color Temperature: 8209 K
CRI: 68.6 CRI R9 Value: -28.3
CQS: 68.6
TLCI: 43
TM-30 Rf: 67.8
TM-30 Rg: 95.4
Beam Angle (50%): 15.9°
Field Angle (10%): 18.5°
Cutoff Angle (3%): 20.8°

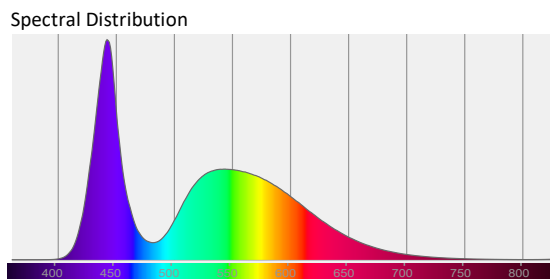
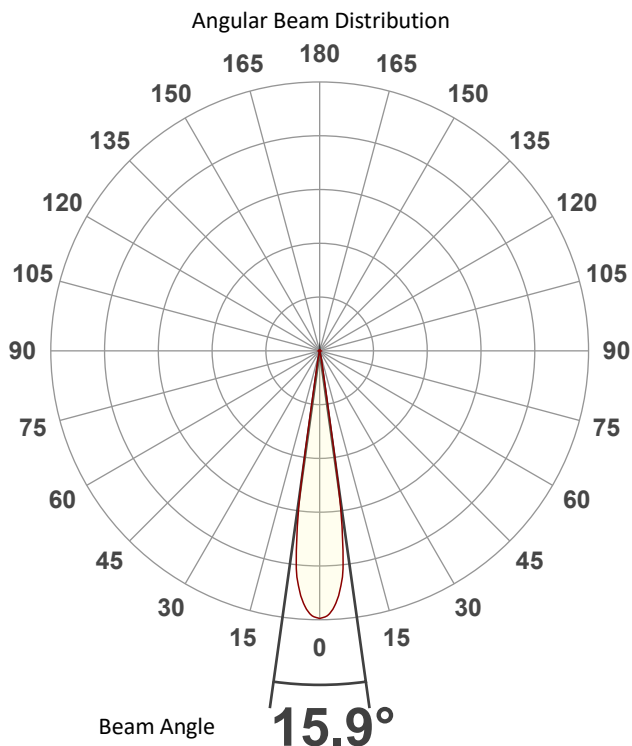


Conditions

AC Supply: 112 V, 60.1 Hz
Power: 423.0 W
Current: 3.76 A
Power Factor: 0.99

This data sheet conforms to American National Standard E1.9 – 2007 (R2017). All data was measured and calculated by a Viso Systems LabSpion Goniometer at the Chauvet PD Optics Laboratory in Sunrise, FL on 1/15/2024 to LM-63-2002 Standards.

Overall Measurement



Tested Color (CIE 1931):
X: 0.293
Y: 0.303

Light Quality
CRI: 68.6

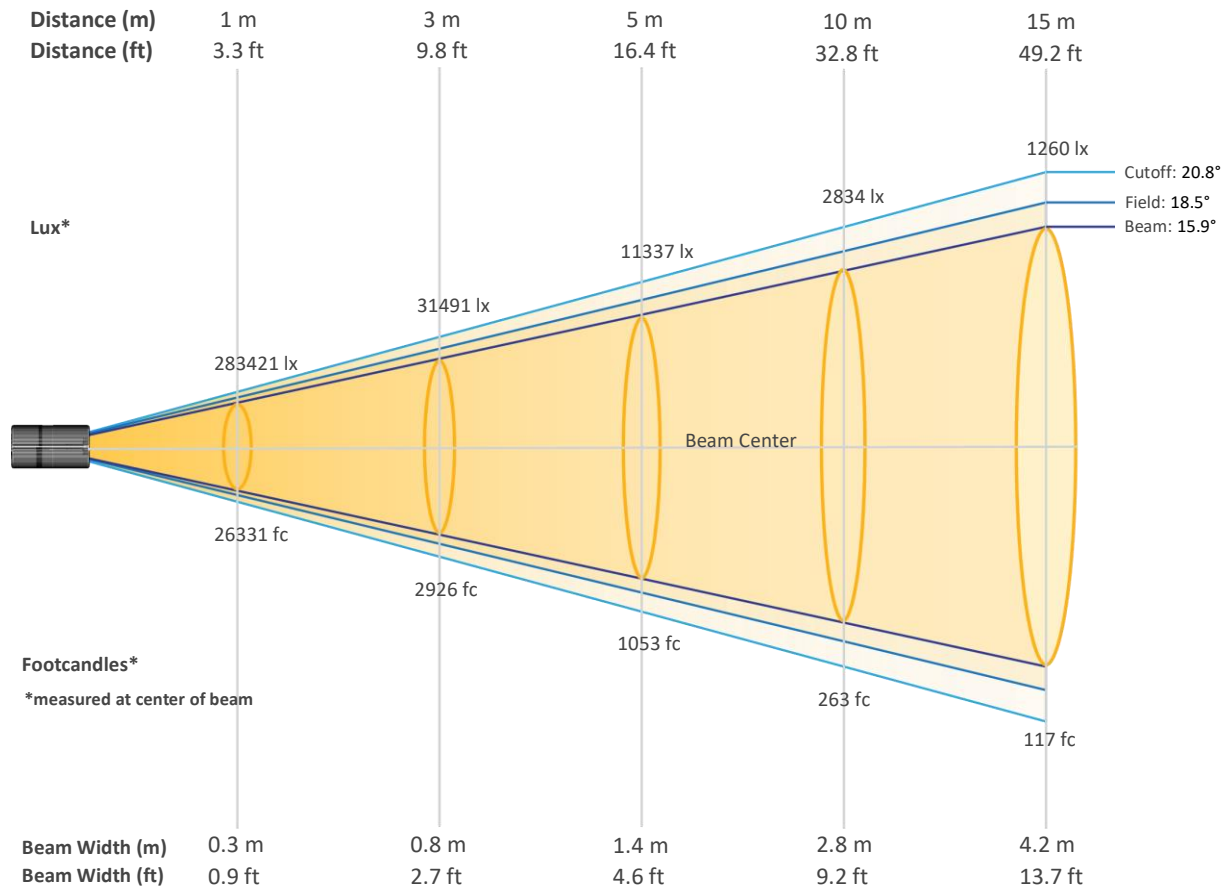
Color Temperature
8209 K



Photometric & Chromaticity Report

Rogue R2E Spot : Full Spot - Full Power - Auto

Beam Details

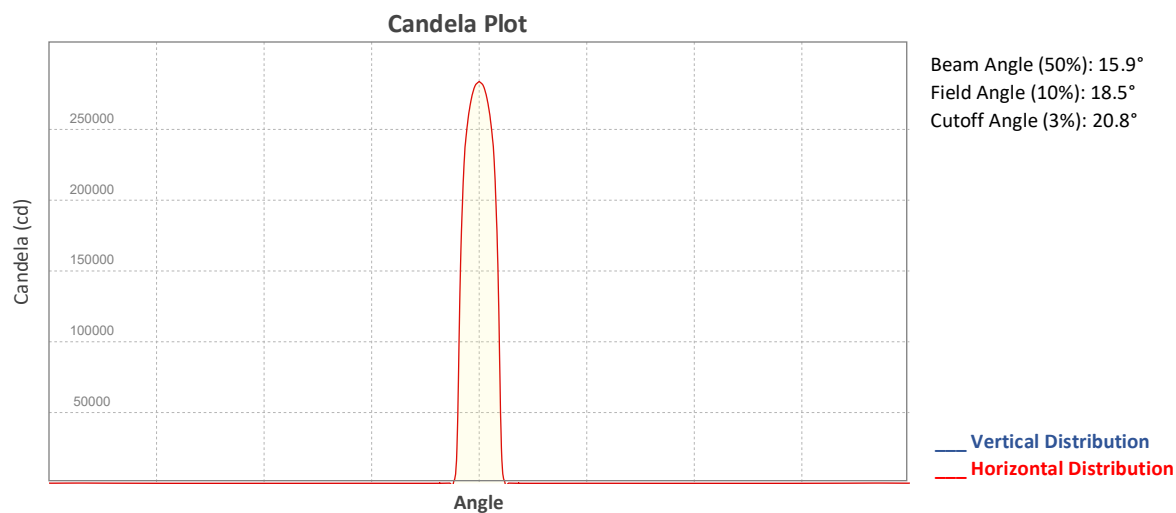


Beam Intensities from 1-20m (3.3-65.6ft)

Distance	1m	2m	3m	4m	5m	6m	7m	8m	9m	10m
Lux	283421	70855	31491	17714	11337	7873	5784	4428	3499	2834
Distance	11m	12m	13m	14m	15m	16m	17m	18m	19m	20m
Lux	2342	1968	1677	1446	1260	1107	981	875	785	709
Distance	3.3ft	6.6ft	9.8ft	13.1ft	16.4ft	19.7ft	23ft	26.2ft	29.5ft	32.8ft
FC	26331	6583	2926	1646	1053	731	537	411	325	263
Distance	36.1ft	39.4ft	42.7ft	45.9ft	49.2ft	52.5ft	55.8ft	59.1ft	62.3ft	65.6ft
FC	218	183	156	134	117	103	91	81	73	66

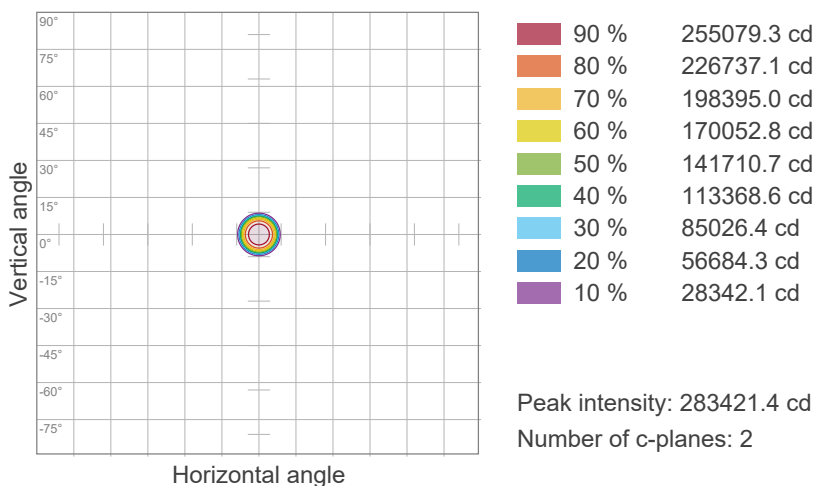
Photometric & Chromaticity Report

Rogue R2E Spot : Full Spot - Full Power - Auto

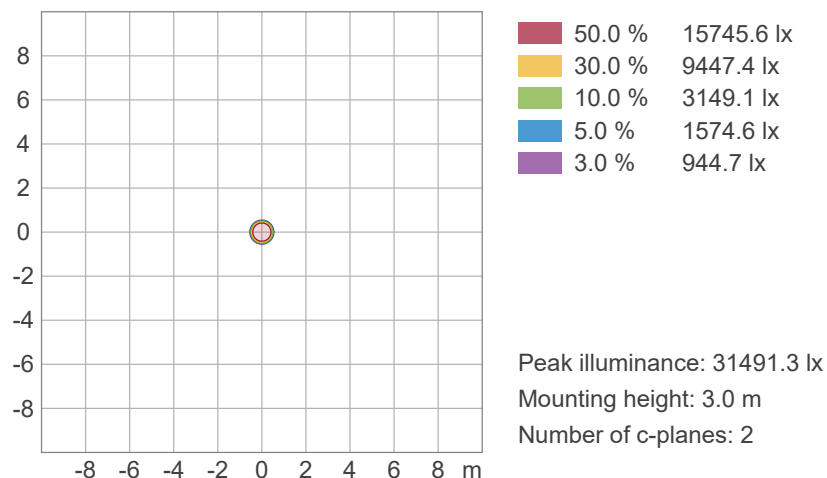


ISO Diagrams

ISO Candela Diagram



ISO Lux Diagram

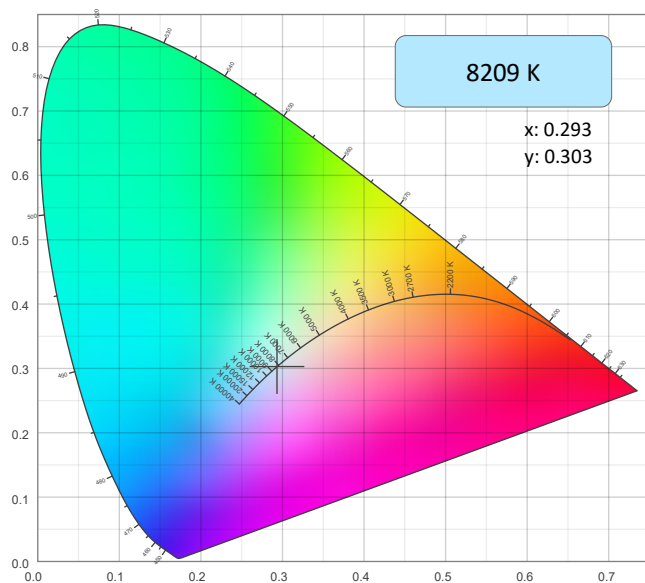


Photometric & Chromaticity Report

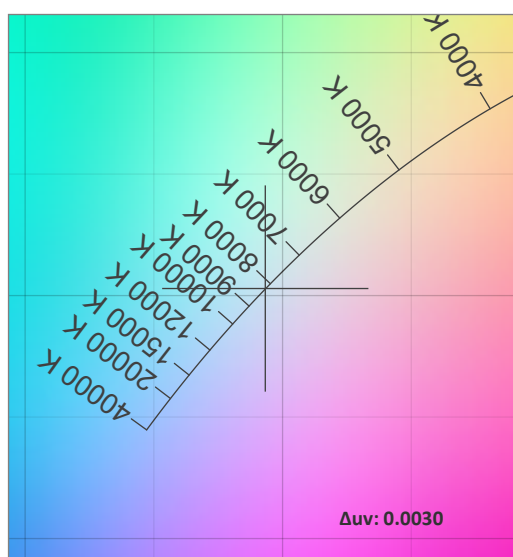
Rogue R2E Spot : Full Spot - Full Power - Auto

Chromaticity

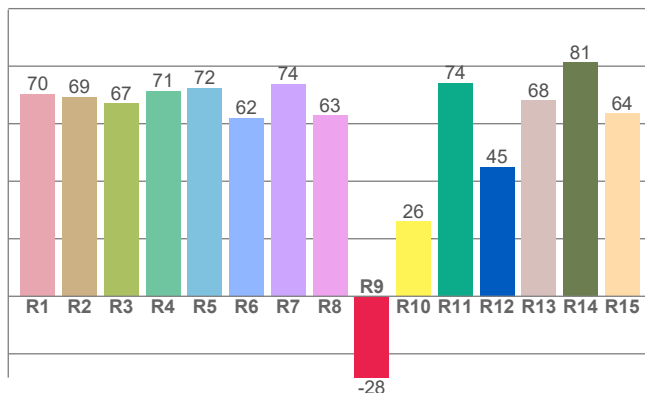
CIE 1931



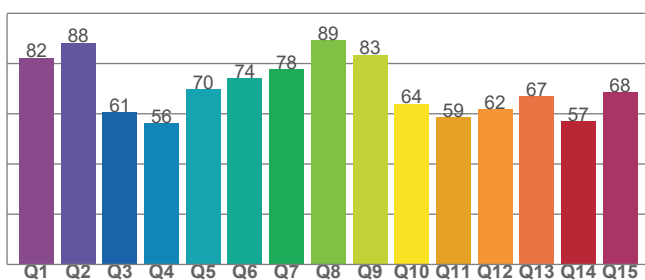
CIE 1931 - Zoom



CRI: 68.6 (R1-R8)



CQS: 68.6



Color Parameters

Color Temperature	Color Coordinate CIE 1931	Color Coordinate CIE 1931
CCT	x	y
8209 K	0.293	0.303

Color Deviation from Black Body Curve	Color Coordinate CIE 1964	Color Coordinate CIE 1964
Δuv	y	u
0.0030	0.303	0.194

Color Rendering Index	Red Component	Color Quality Scale
CRI	CRI - R9	CQS
68.6	-28.3	68.6

Television Lighting Consistency Index	Color Fidelity	Color Gamut
TLCI	TM30 - Rf	TM30 Rg
43	67.8	95.4

Photometric & Chromaticity Report

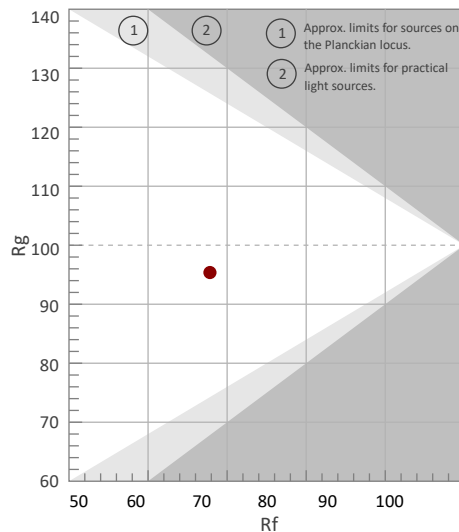
Rogue R2E Spot : Full Spot - Full Power - Auto

TM-30 Details

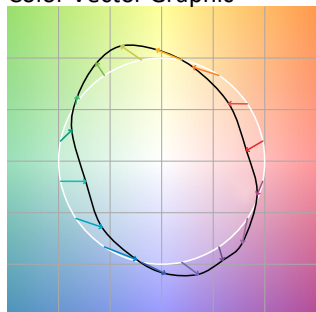
Rf 67.8
Fidelity Index (Rg)

Rg 95.4
Gammut Index (Rg)

Hue Bin	R _f	Graphic shifts (%)	
		Chroma	Hue
1	68	-17%	-6%
2	68	-15%	10%
3	60	-7%	25%
4	57	5%	26%
5	63	17%	17%
6	78	14%	0%
7	89	3%	-7%
8	74	-9%	-12%
9	78	-24%	5%
10	63	-16%	21%
11	34	-7%	32%
12	66	6%	25%
13	75	15%	13%
14	76	13%	-4%
15	73	9%	-22%
16	75	-3%	-14%



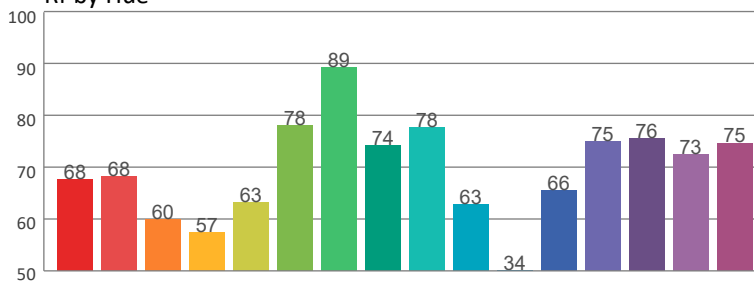
Color Vector Graphic



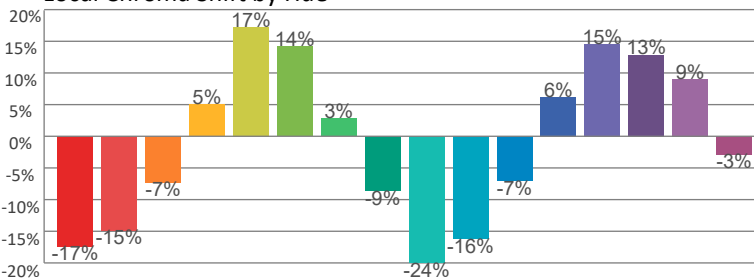
Color Distortion Graphic



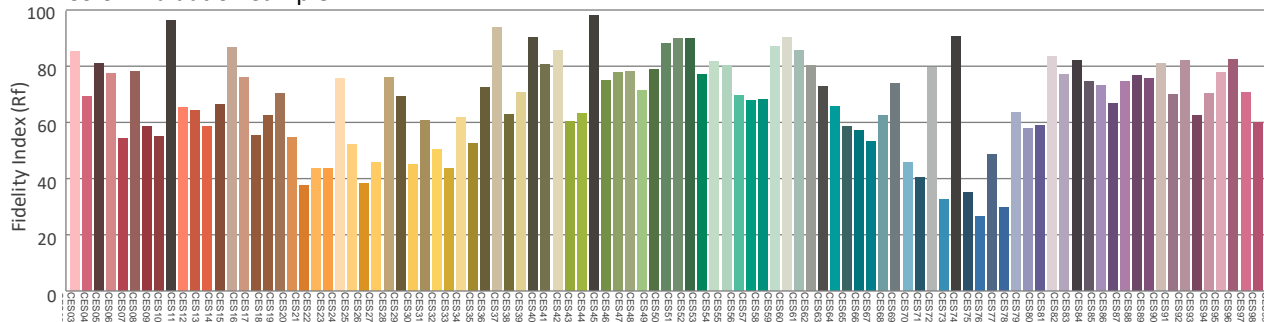
Rf by Hue



Local Chroma Shift by Hue



Color Evaluation Sample



Photometric & Chromaticity Report

Rogue R2E Spot : Full Spot - Full Power - Auto - Stable

Report Summary

Measurements

Fixture Output: 15964 lm
Fixture Peak: 275471 cd
Fixture Efficacy: 39 lm/W
Intensity @ 5m: 11019 lux
Color Temperature: 8236 K
CRI: 69.1 CRI R9 Value: -27.2
CQS: 68.8
TLCI: 44
TM-30 Rf: 68.4
TM-30 Rg: 95.4
Beam Angle (50%): 15.7°
Field Angle (10%): 18.8°
Cutoff Angle (3%): 19.3°

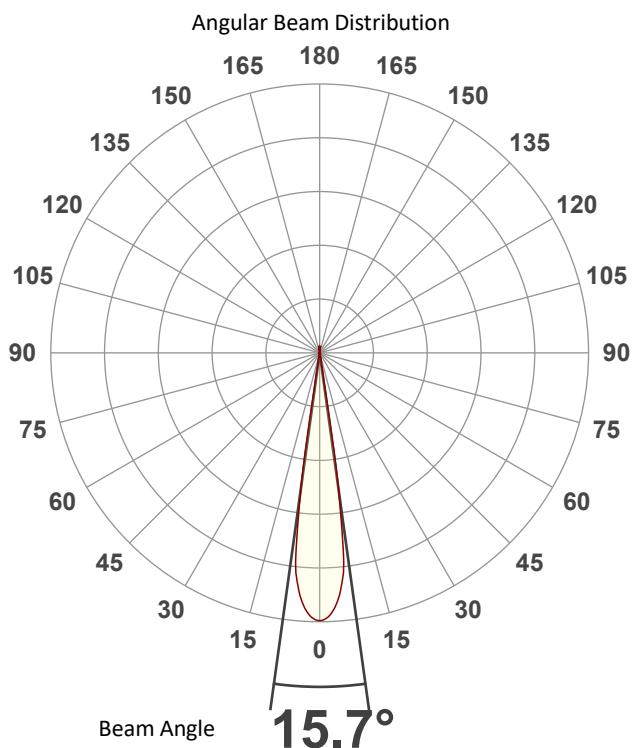


Conditions

AC Supply: 111 V, 60 Hz
Power: 417.73 W
Current: 3.75 A
Power Factor: 0.99

This data sheet conforms to American National Standard E1.9 – 2007 (R2017). All data was measured and calculated by a Viso Systems LabSpion Goniometer at the Chauvet PD Optics Laboratory in Sunrise, FL on 1/15/2024 to LM-63-2002 Standards.

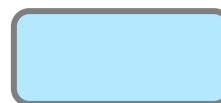
Overall Measurement



Tested Color (CIE 1931):

X: 0.293

Y: 0.303



Light Quality

CRI: 69.1

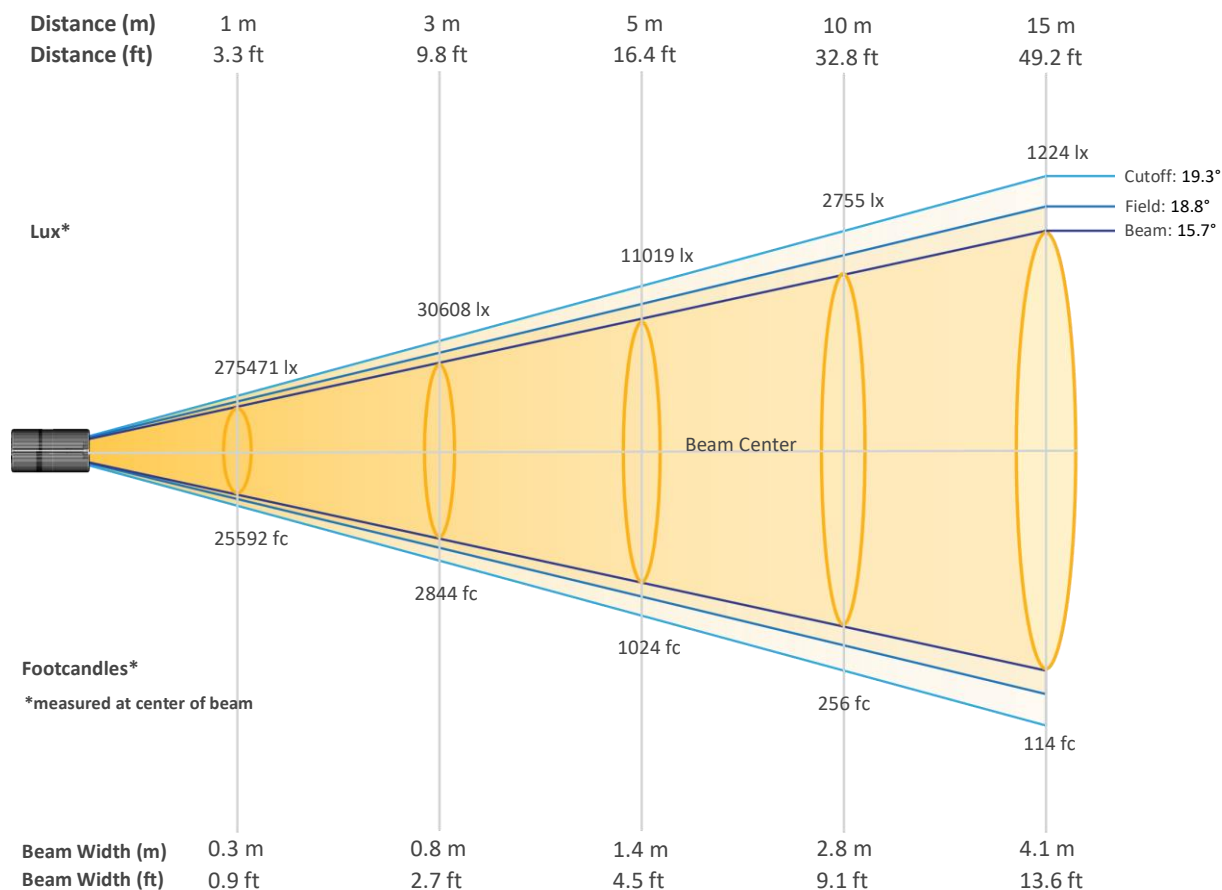
Color Temperature

8236 K

Photometric & Chromaticity Report

Rogue R2E Spot : Full Spot - Full Power - Auto - Stable

Beam Details

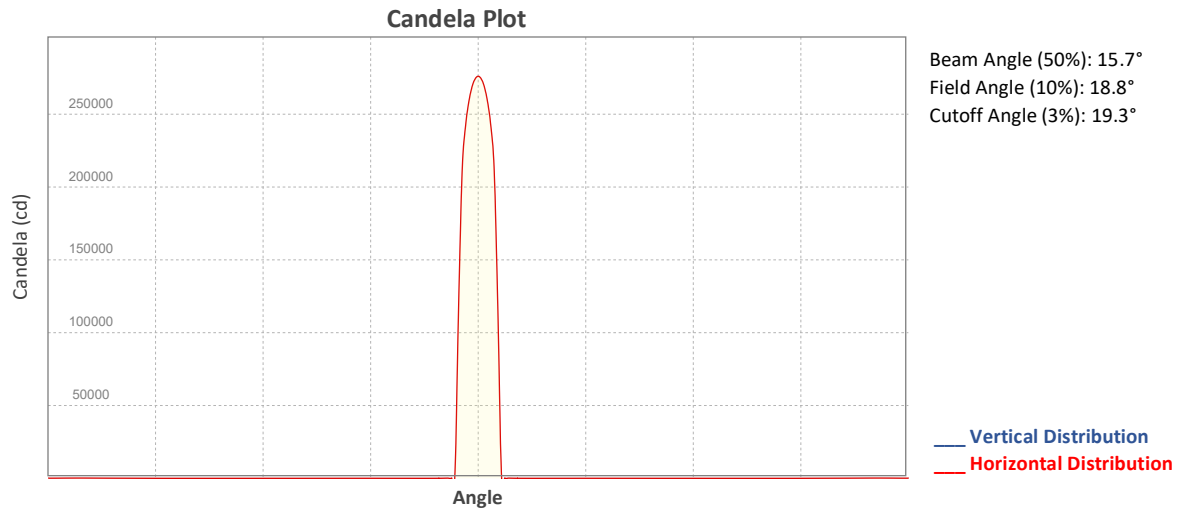


Beam Intensities from 1-20m (3.3-65.6ft)

Distance	1m	2m	3m	4m	5m	6m	7m	8m	9m	10m
Lux	275471	68868	30608	17217	11019	7652	5622	4304	3401	2755
Distance	11m	12m	13m	14m	15m	16m	17m	18m	19m	20m
Lux	2277	1913	1630	1405	1224	1076	953	850	763	689
Distance	3.3ft	6.6ft	9.8ft	13.1ft	16.4ft	19.7ft	23ft	26.2ft	29.5ft	32.8ft
FC	25592	6398	2844	1600	1024	711	522	400	316	256
Distance	36.1ft	39.4ft	42.7ft	45.9ft	49.2ft	52.5ft	55.8ft	59.1ft	62.3ft	65.6ft
FC	212	178	151	131	114	100	89	79	71	64

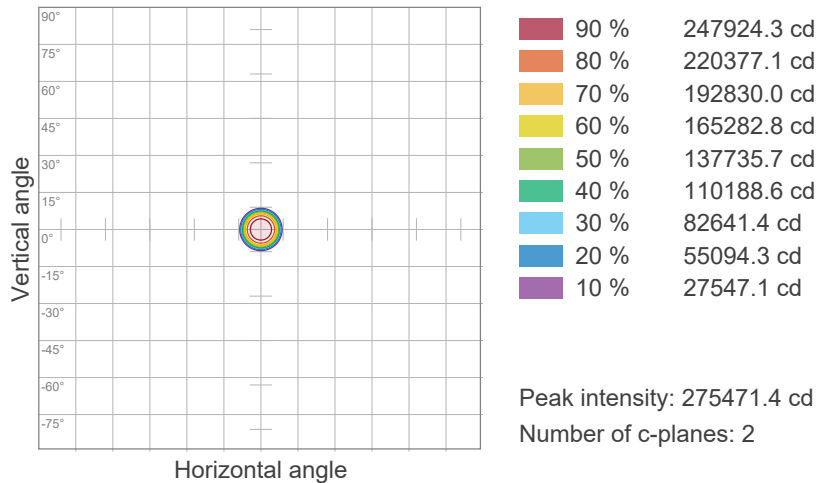
Photometric & Chromaticity Report

Rogue R2E Spot : Full Spot - Full Power - Auto - Stable

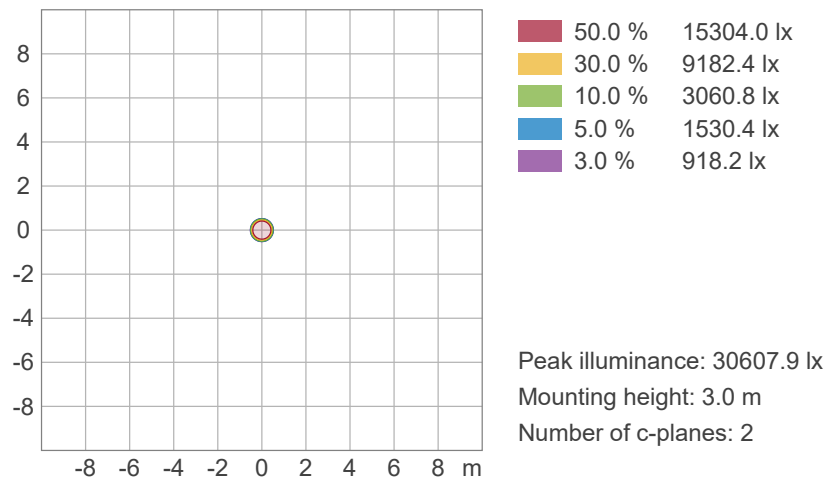


ISO Diagrams

ISO Candela Diagram



ISO Lux Diagram

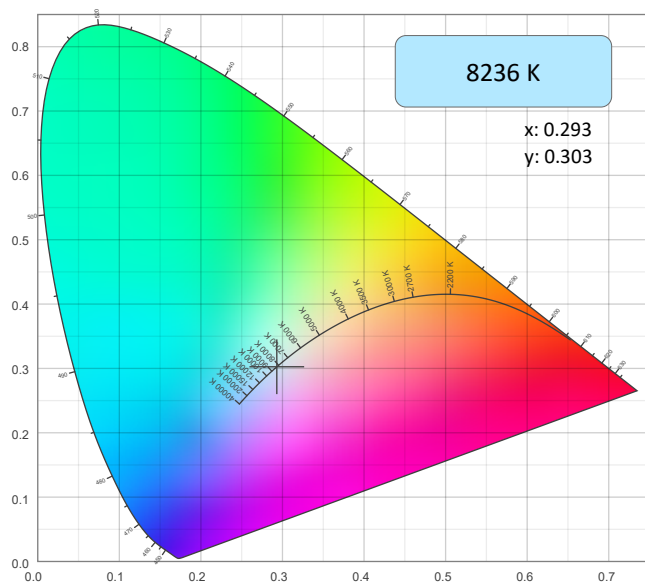


Photometric & Chromaticity Report

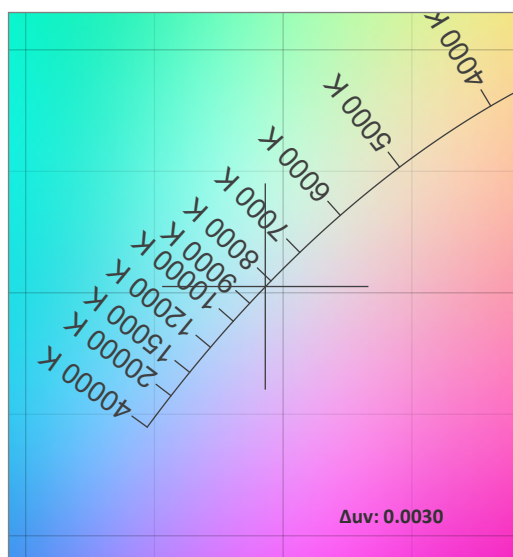
Rogue R2E Spot : Full Spot - Full Power - Auto - Stable

Chromaticity

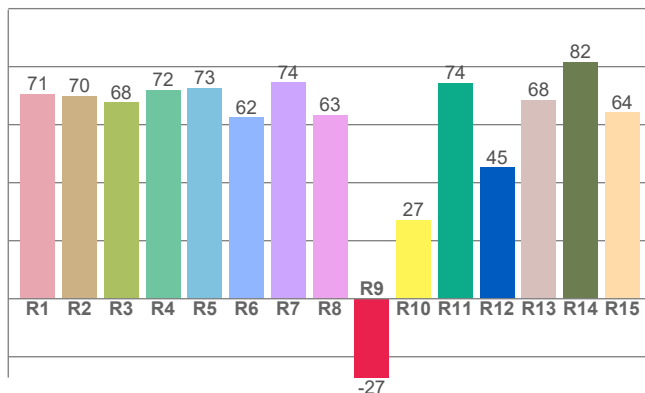
CIE 1931



CIE 1931 - Zoom



CRI: 69.1 (R1-R8)

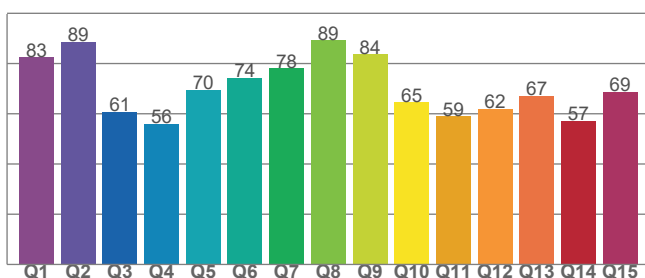


Color Parameters

Color Temperature	Color Coordinate CIE 1931	Color Coordinate CIE 1931
CCT	x	y
8236 K	0.293	0.303

Color Deviation from Black Body Curve	Color Coordinate CIE 1964	Color Coordinate CIE 1964
Δuv	y	u
0.0030	0.303	0.194

CQS: 68.8



Color Rendering Index	Red Component	Color Quality Scale
CRI	CRI - R9	CQS
69.1	-27.2	68.8

Television Lighting Consistency Index	Color Fidelity	Color Gamut
TLCI	TM30 - Rf	TM30 Rg
44	68.4	95.4

Photometric & Chromaticity Report

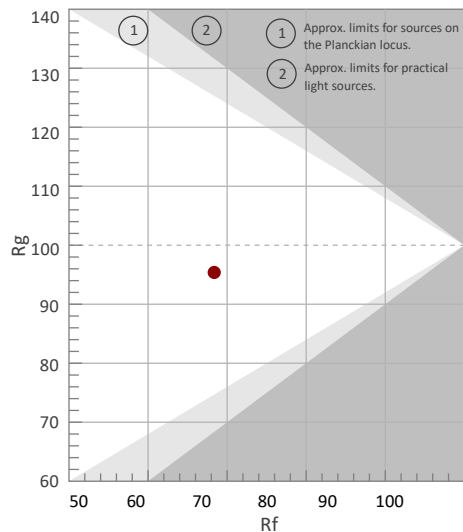
Rogue R2E Spot : Full Spot - Full Power - Auto - Stable

TM-30 Details

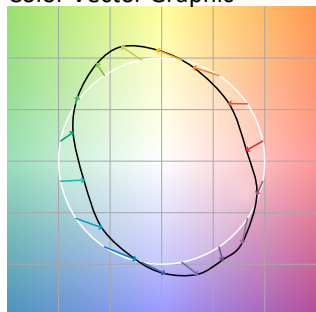
Rf 68.4
Fidelity Index (Rg)

Rg 95.4
Gammut Index (Rg)

Hue Bin	R _f	Graphic shifts (%)	
		Chroma	Hue
1	68	-17%	-6%
2	68	-15%	10%
3	61	-7%	25%
4	58	5%	26%
5	64	16%	16%
6	79	14%	0%
7	90	2%	-7%
8	76	-10%	-11%
9	77	-22%	3%
10	63	-16%	21%
11	35	-7%	32%
12	66	6%	24%
13	75	14%	13%
14	76	12%	-4%
15	72	9%	-23%
16	75	-3%	-13%



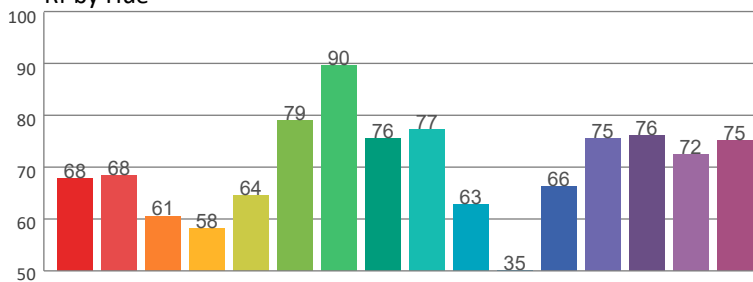
Color Vector Graphic



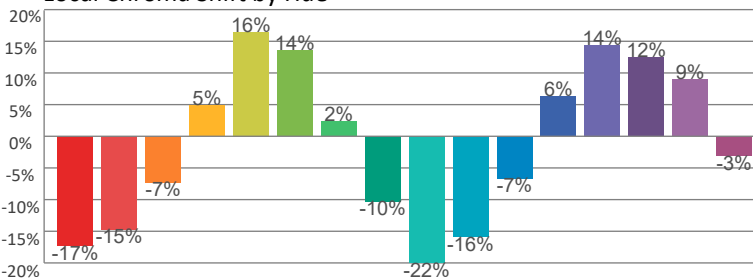
Color Distortion Graphic



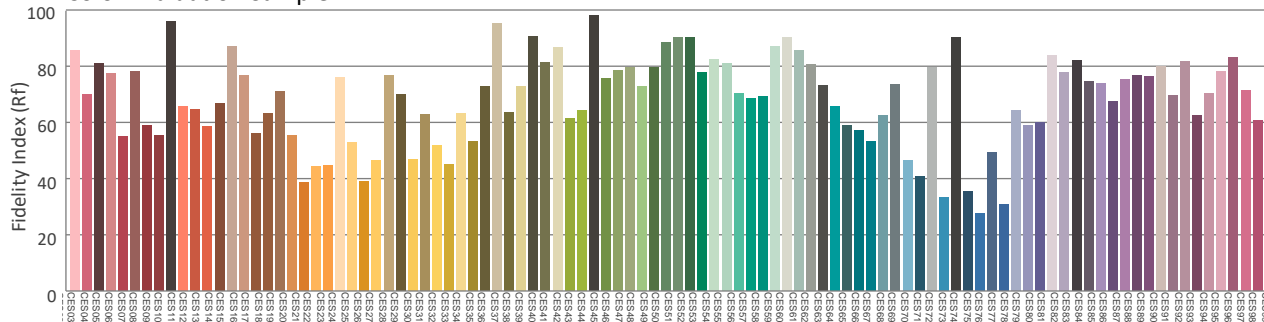
R_f by Hue



Local Chroma Shift by Hue



Color Evaluation Sample



Photometric & Chromaticity Report

Rogue R2E Spot : Full Spot - Full Power - ECO

Report Summary

Measurements

Fixture Output: 14534 lm
Fixture Peak: 250316 cd
Fixture Efficacy: 39 lm/W
Intensity @ 5m: 10013 lux
Color Temperature: 8173 K
CRI: 68.2 CRI R9 Value: -29.7
CQS: 68.4
TLCI: 43
TM-30 Rf: 67.4
TM-30 Rg: 95.4
Beam Angle (50%): 15.8°
Field Angle (10%): 18.6°
Cutoff Angle (3%): 20.3°

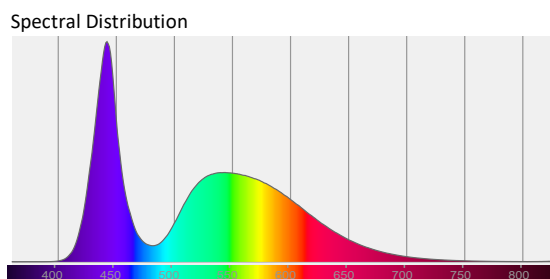
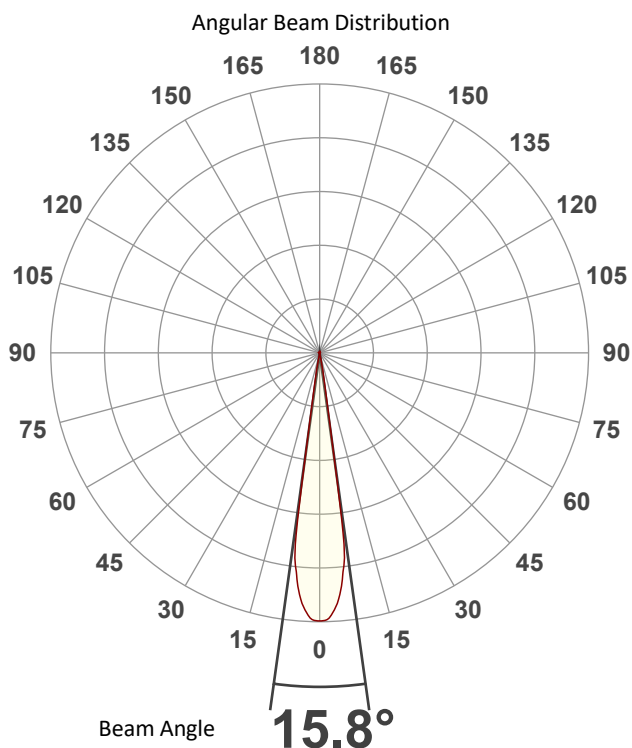


Conditions

AC Supply: 114 V, 60 Hz
Power: 374.03 W
Current: 3.29 A
Power Factor: 0.99

This data sheet conforms to American National Standard E1.9 – 2007 (R2017). All data was measured and calculated by a Viso Systems LabSpion Goniometer at the Chauvet PD Optics Laboratory in Sunrise, FL on 1/15/2024 to LM-63-2002 Standards.

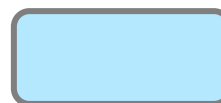
Overall Measurement



Tested Color (CIE 1931):

X: 0.294

Y: 0.303



Light Quality

CRI: 68.2

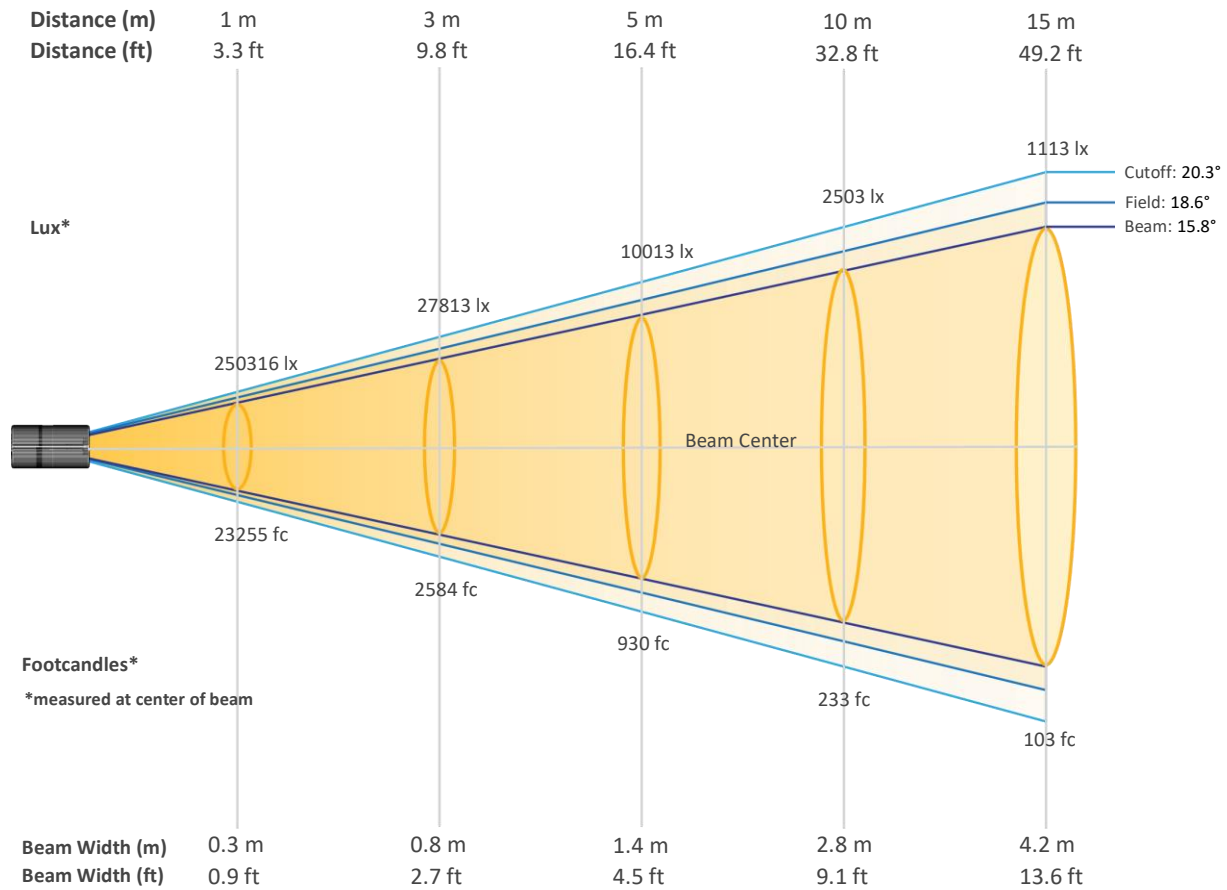
Color Temperature

8173 K

Photometric & Chromaticity Report

Rogue R2E Spot : Full Spot - Full Power - ECO

Beam Details

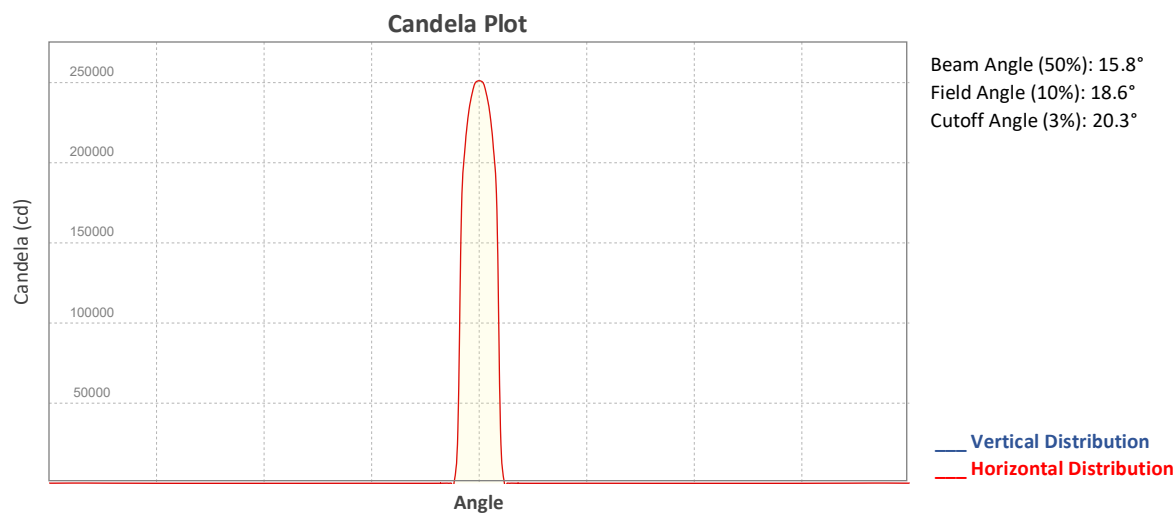


Beam Intensities from 1-20m (3.3-65.6ft)

Distance	1m	2m	3m	4m	5m	6m	7m	8m	9m	10m
Lux	250316	62579	27813	15645	10013	6953	5108	3911	3090	2503
Distance	11m	12m	13m	14m	15m	16m	17m	18m	19m	20m
Lux	2069	1738	1481	1277	1113	978	866	773	693	626
Distance	3.3ft	6.6ft	9.8ft	13.1ft	16.4ft	19.7ft	23ft	26.2ft	29.5ft	32.8ft
FC	23255	5814	2584	1453	930	646	475	363	287	233
Distance	36.1ft	39.4ft	42.7ft	45.9ft	49.2ft	52.5ft	55.8ft	59.1ft	62.3ft	65.6ft
FC	192	161	138	119	103	91	80	72	64	58

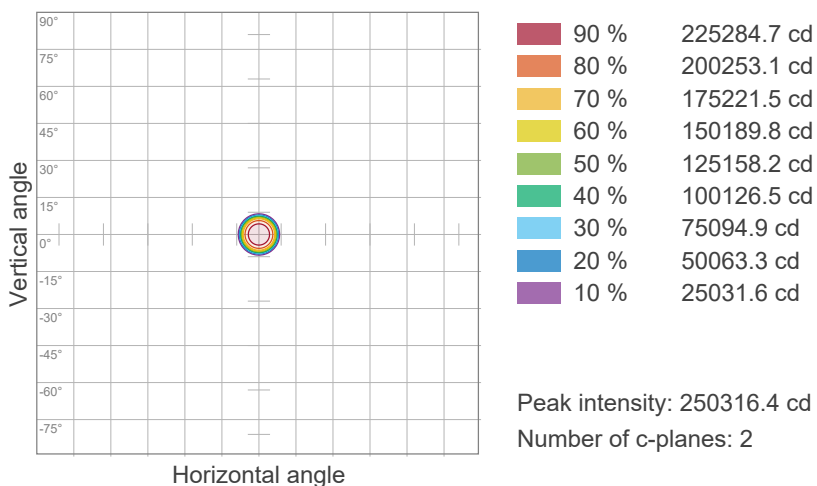
Photometric & Chromaticity Report

Rogue R2E Spot : Full Spot - Full Power - ECO

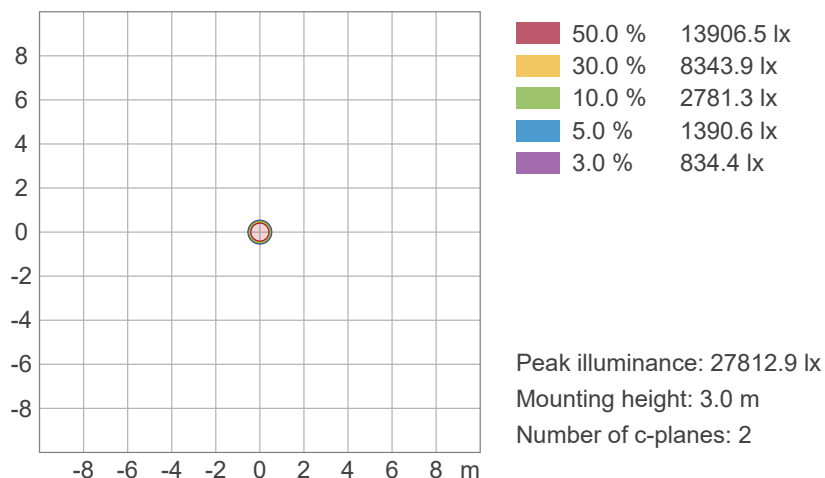


ISO Diagrams

ISO Candela Diagram



ISO Lux Diagram

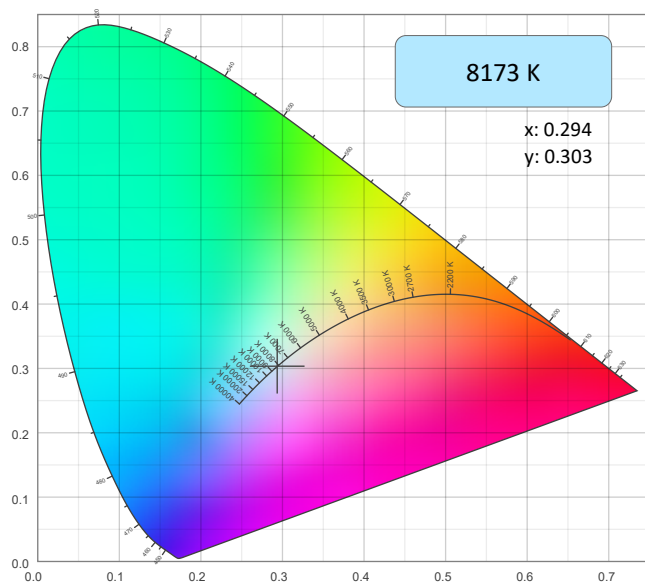


Photometric & Chromaticity Report

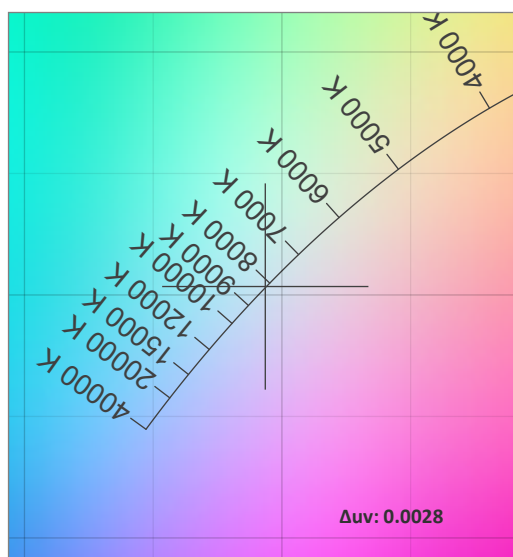
Rogue R2E Spot : Full Spot - Full Power - ECO

Chromaticity

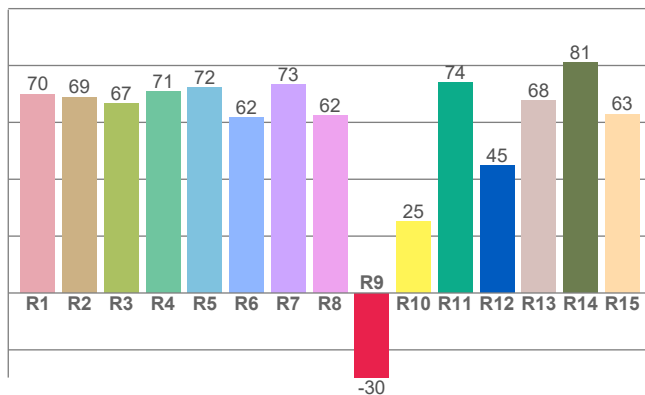
CIE 1931



CIE 1931 - Zoom



CRI: 68.2 (R1-R8)

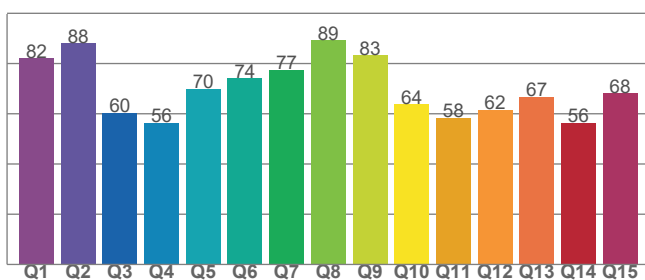


Color Parameters

Color Temperature	Color Coordinate CIE 1931	Color Coordinate CIE 1931
CCT	x	y
8173 K	0.294	0.303

Color Deviation from Black Body Curve	Color Coordinate CIE 1964	Color Coordinate CIE 1964
Δuv	y	u
0.0028	0.303	0.194

CQS: 68.4



Color Rendering Index	Red Component	Color Quality Scale
CRI	CRI - R9	CQS
68.2	-29.7	68.4

Television Lighting Consistency Index	Color Fidelity	Color Gamut
TLCI	TM30 - Rf	TM30 Rg
43	67.4	95.4

Photometric & Chromaticity Report

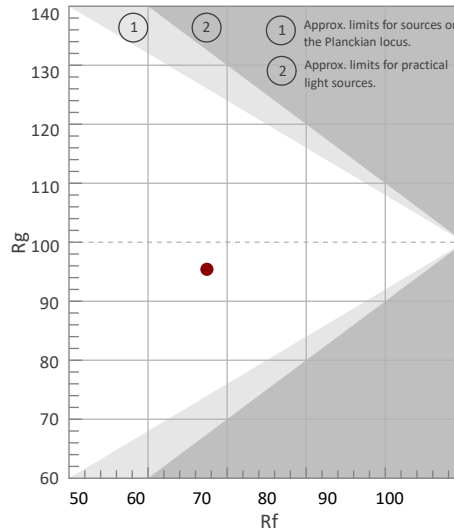
Rogue R2E Spot : Full Spot - Full Power - ECO

TM-30 Details

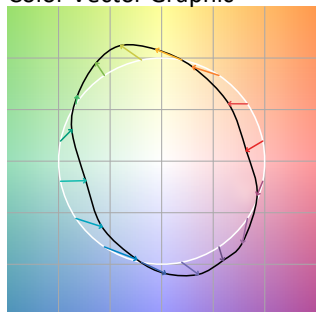
Rf 67.4
Fidelity Index
(Rg)

Rg 95.4
Gammut Index (Rg)

Hue Bin	Graphic shifts (%)		
	R _f	Chroma	Hue
1	67	-18%	-6%
2	68	-15%	10%
3	60	-7%	26%
4	57	5%	26%
5	62	18%	17%
6	78	15%	0%
7	89	3%	-7%
8	74	-9%	-13%
9	78	-24%	4%
10	63	-17%	21%
11	34	-7%	33%
12	65	6%	25%
13	75	15%	13%
14	75	13%	-4%
15	72	9%	-22%
16	74	-3%	-14%



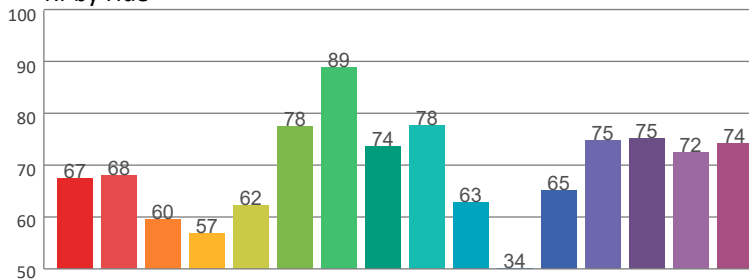
Color Vector Graphic



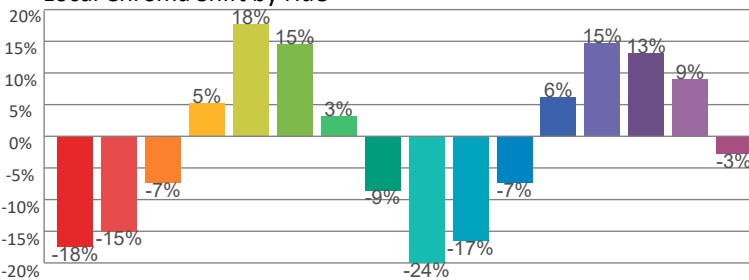
Color Distortion Graphic



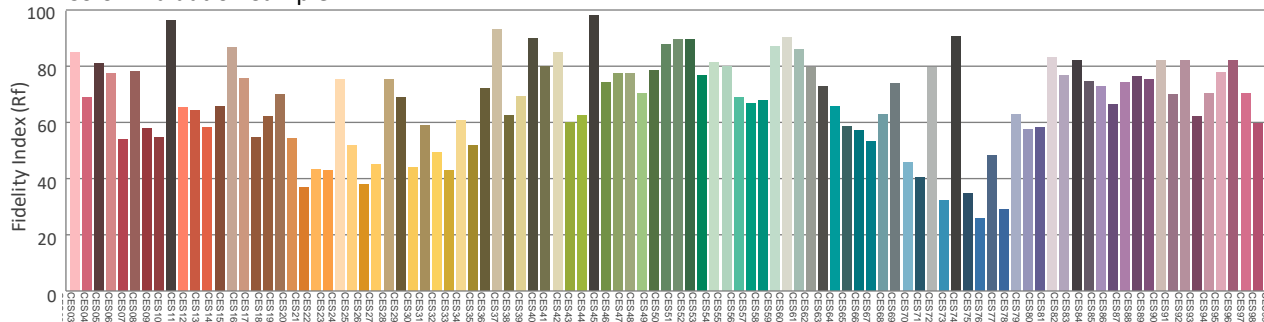
R_f by Hue



Local Chroma Shift by Hue



Color Evaluation Sample



Contact Us

General Information	Technical Support
Chauvet World Headquarters	
Address: 3360 Davie Rd., Suite 509 Davie, FL 33314 Voice: (954) 577-4455 Fax: (954) 929-5560 Toll Free: (800) 762-1084	Voice: (844) 393-7575 Fax: (954) 756-8015 Email: chauvetcs@chauvetlighting.com Website: www.chauvetdj.com
Chauvet U.K.	
Address: Pod 1 EVO Park Little Oak Drive, Sherwood Park Nottinghamshire, NG15 0EB UK Voice: +44 (0) 1773 511115 Fax: +44 (0) 1773 511110	Email: UKtech@chauvetlighting.eu Website: www.chauvetprofessional.eu
Chauvet Benelux	
Address: Stokstraat 18 9770 Kruishoutem Belgium Voice: +32 9 388 93 97	Email: BNLtech@chauvetlighting.eu Website: www.chauvetdj.eu
Chauvet France	
Address: 3, Rue Ampère 91380 Chilly-Mazarin France Voice: +33 1 78 85 33 59	Email: FRtech@chauvetlighting.fr Website: www.chauvetdj.eu
Chauvet Germany	
Address: Bruno-Bürgel-Str. 11 28759 Bremen Germany Voice: +49 421 62 60 20	Email: DEtech@chauvetlighting.de Website: www.chauvetdj.eu
Chauvet Mexico	
Address: Av. de las Partidas 34 - 3B (Entrance by Calle 2) Zona Industrial Lerma Lerma, Edo. de México, CP 52000 Voice: +52 (728) 690-2010	Email: servicio@chauvet.com.mx Website: www.chauvetdj.mx